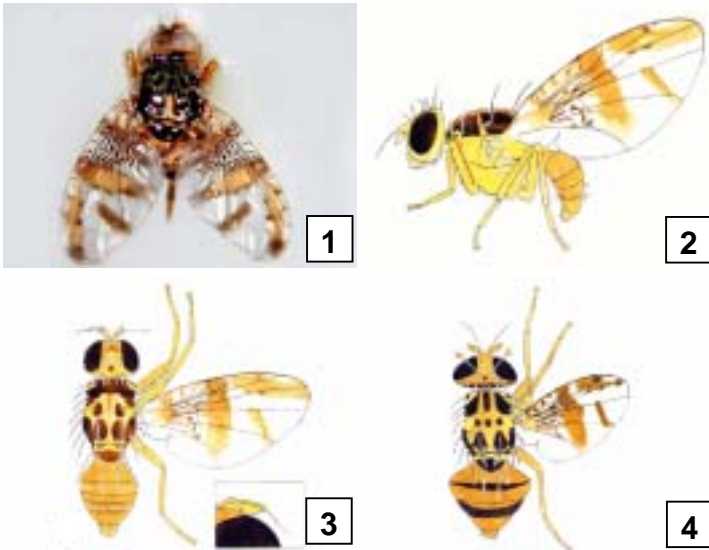


地中海果實蠅 *Ceratitits capitata* (Wiedemann)

曾義雄 經濟部標準檢驗局高雄分局



圖二十八、地中海果實蠅：1，雌成蟲背面觀；2，雌成蟲側面觀；3、雌成蟲背面及觸角；4，雄成蟲背面觀。

一、害蟲名稱

學名：*Ceratitits (Ceratitis) capitata* (Wiedemann)

異名：*Trypeta capitata* Wiedmann、*Certitis capitata* MaCallan、*Ceratitis hispanica*、*Tephritis capitata*、*Ceratitis citriperda* Macleay

分類地位：雙翅目(Diptera)、環裂群(Cyclornapha)、裂額亞目(Schizophora)、無瓣類(Acalyptrutae)、果實蠅科(Tephritidae)

中文名：地中海果實蠅

英文名：Mediterranean fruit fly, medfly, mediterranean fruit fly。

二、寄主植物

彌猴桃科(Actinidaceae)的彌猴桃 (*Actinidia chinensis* (Chinese gooseberry, kiwi berry, yang-tao)) ; 龍舌蘭科(Agavaceae)的(*Cordyline* sp. (probably *terminalis*)(ti, good luck plant))、*Cotoneaster adpressus* Bois cv. *Praecox* (early creeping cotoneaster) ; 石蒜科(Amaryllidaceae)的 *Crinum asiaticumpoison* (bulb, St. John's lily)、*Cucumis anguria* (West Indian gherkin, ber gherkin, gooseberry gourd, wild cucumber) ; 漆樹科(Anacardiaceae)的介壽果(*Ancardium occidentale* (cashew, maranon))、芒果 *Mangifera indica* (mango)、*Schinus molle* (California peppertree, Peruvian peppertree)、*Spondias* sp. (West Indian plum)、*Spondias axillaris* 太平洋溫悖(*Spondias cytherea* (ambarella, Jew plum, otaheite apple, vi-apple, golden apple, wi tree))、*Spondias dulcis*、黃酸棗(*Spondias lutea*)、*Spondias mombin* (yellow mombin, hog plum, Spanish plum, cajamerin, jobo)、*Spondias purpurea* (red mombin, jacote, Spanish plum, purple mombin)、*Spondias solandri*、*Spondias venulosa* ; 番荔枝科

(Annonaceae)的秘魯番荔枝(*Annona cherimola* (cherimoya, chirimoya, custard apple))、野番荔枝 *Annona glabra* (pond apple)、刺番荔枝(*Annona muricata* (soursop, guanabana, prickly custard apple))、牛心梨(*Annona reticulata* (custard apple, annona, bullock's-heart))、番荔枝(*Annona squamosa* (sugar apple, custard apple, sweet-sop))、鷹爪花(*Artabotrys hexapetalus* (tail grape, climbing ylang-ylang, climbing ilang-ilang))、*Artabotrys odoratissimus*、鷹爪桃(*Artabotrys uncinatus*)、香水樹 (*Cananga odorata* (ilang-ilang, ylang-ylang))；夾竹桃科(Apocynaceae)的 *Carissa* spp.、*Carissa acuminata*、*Carissa arduina*、*Carissa bispinosa* (hedge thorn, carissa, natal plum, amatungulu)、納達爾梅子(*Carissa carandas* (karandak, karanda carissa))、巨花假虎刺(*Carissa grandiflora* (natal plum, amatungulu, carissa))、*Landolphia* sp. (gumvine)、*Ochrosia elliptica* (ochrosia, bourbon orange)、*Thevetia neriifolia*、黃花夾竹桃(*Thevetia peruviana* (yellow oleander, be still tree, lucky nut))；冬青科(Aquifoliaceae)的 *Ilex glabra* (gallberry, bitter gallberry, inkberry)、*Ilex vomitoria* (yaupon, cassina, cassena, cassine, Carolina holly)；天南星科(Arceae)的龜背芋 *Monstera deliciosa* (ceriman, Swiss-cheese plant, breadfruit vine, pina annona)、小檗科(Berberidaceae)的伏牛花(*Berberis holstii* (barberry))；木棉科(Bombacaceae)的 *Sterculia apetala* (camoruco)；紫草科(Boraginaceae)的 *Parmentiera edulis* (cuachilote, cuajilote)、*Cordia* sp.；鳳梨科(Bromeliaceae)的鳳梨(*Ananas comosus* (pineapple))、*Ananas sativus*、*Annona* sp.；仙人掌科(Cactaceae)的 *Acanthocereus pentagonus*、待宵仙人掌(*Acanthocereus tetragonus*)、疏刺仙人掌 (*Echinocereus triglochidiatus* (cactus))、三角柱 (*Hylocereus undatus* (night-blooming cereus, queen-of-the-night, Honolulu-queen, pitaya))、*Opuntia* spp.、*Opuntia compressa*、*Opuntia decumana*、仙人掌(*Opuntia*

dillenii (Dillen pricklypear)、*Opuntia englemannii*、*Opuntia ficus-indica* (Indian fig, spineless cactus, Engelmann pricklypear, mission pricklypear)、*Opuntia humifusa* (cholla)、*Opuntia megacantha*、*Opuntia occidentalis*、*Opuntia tuna* (tuna pricklypear)、*Opuntia vulgaris* (pricklypear, Barbary fig, Irish-mittens, cactus fruit)、針葉仙人掌(*Pereskia aculeata* (Barbados gooseberry, pereskia lemon vine, leafy cactus))、*Pereskia pereskia*、嫦娥仙人柱(*Selenicereus pteranthus* (princess-of-the-night, king-of-the-night, cactus))；山柑科(Capparidaceae)的 *Capparis citrifolia* (caper bush)、*Capparis sandwichiana* (puapilo)、*Capparis spinosa* (caper bush, caper)；十字花科(Cruciferaea)的花椰菜(*Brassica oleracea* (broccoli, cauliflower))；番木瓜科(Caricaceae)的木瓜(*Carica papaya* (papaya, pawpaw, melon tree))、*Carica quercifolia* (dwarfpapaya, oakleaf papaya, baby papaya)、使君子科(Combretaceae)的 *Terminalia* spp.、欖仁 *Terminalia catappa* (tropical almond, fake kamani, winged kamani, Indian almond)、珂梨勒(*Terminalia chebula* (black myrobalan, Natal plum))、*Terminalia pallida*、葫蘆科(Cucurbitaceae)的 *Citrullus lanatus* (water melon)、西瓜(*Citrullus vulgaris*)、*Cucumis dipsaceus* (hedgehog gourd, teasel gourd, wild cucumber)、*Cucumis erinaceus*、*Cucumis grossulariiformis*、香瓜(*Cucumis melo* (melon, cantaloupe, muskmelon, casaba))、胡瓜(*Cucumis sativus* (cucumber, pepino)、*Cucurbita* spp. { squash (winter and autumn), pumpkin })、栗南瓜(*Cucurbita maxima* { squash (winter and autumn), pumpkin, Hubbard squash })、美國南瓜(*Cucurbita moschata* { pumpkin, Canada pumpkin, crookneck squash (Canada and Winter), Cushaw pumpkin })、*Cucurbita pepo* { pumpkin (autumn and summer), squash (autumn and summer), gourd, marrow })、*Melothria pendula* (creeping cucumber)、*Momordica balsamina* (balsam-apple, wonder

apple)、 苦瓜(*Momordica charantia* (balsam pear, bitter gourd, bitter cucumber))、 梨瓜(*Sechium edule* (chayote, christophine, pipenella)) ; 柿樹科(Ebenaceae)的 *Diospyros* spp.、 *Diospyros chinensis*、 *Diospyros decandra* (persimmon)、 *Diospyros ebenum* (black sapote, zapote negro, ebony)、 *Diospyros ebenaster*、 柿(紅柿)(*Diospyros kaki* (Japanese persimmon, oriental persimmon, kaki persimmon)) 、 *Diospyros mespiliformis* (medlar persimmon)、 *Diospyros virginiana* (common persimmon, wild persimmon) ; 杜鵑花科(Ericaceae)的 *Vaccinium* spp. (blueberry, huckleberry, cranberry, bilberry, ohelo berry) ; 大戟科(Euphorbiaceae)的 *Euphorbia lathyris* (caper spurge, myrtle spurge, mole plant, caper euphorbia, gopher apple)、 *Euphorbia longan* (longan, dragon's eye)、 巴西橡皮樹(*Hevea brasiliensis* (para rubber tree, caoutchoue, Brazil rubber))、 西印度醋栗(*Phyllanthus acidus* (grosella, Otaheite gooseberry, leafflower, gooseberry tree, Ceylon gooseberry))、 *Putranjiva roxburghii* (wild olive, India amulet plant) ; 草海桐科(Goodeniaceae)的 *Scaevola plumieri* (goodenia beechberry) ; 金絲桃科(Guttiferae)的瓊崖海棠(*Calophyllum inophyllum* (Alexandrian laurel, Indian laurel, laurelwood, ball kamani, indiapoon beauty-leaf))、 鳳果(*Garcinia mangostana* (mangosteen))、 蛋樹(*Garcinia xanthochymus* (garcinia, gourka))、 *Gardenia* sp. (gardenia) ; 樟科(Lauraceae)的酪梨(*Persea americana* (avocado, alligator pear, aguacate))、 *Persea gratissima* ; 胡桃科(Juglandaceae)的 *Juglans* spp. (walnut)、 *Juglans nigra* (black walnut)、 *Juglans regia* (walnut) ; 豆科(Leguminosae)的 *Inga feuille* (paca)、 *Inga paterno* (ice cream bean, paterna)、 黃帝豆(*Phaseolus lunatus* (lima bean, sieva bean, cibet bean, butter bean))、 菜豆(*Phaseolus vulgaris* (frijol, green bean, string bean, snap bean, kidney bean, hatricot))、 *Robinia* sp. (locust)、 *Rosa* sp. (rose,

roseberry) ; 百合科(Liliaceae)的 *Asparagus* sp.、*Asparagus densiflorus* (Sprenger asparagus, sprengeri fern, emerald fern)、石刁柏(*Asparagus officinalis* (common asparagus, graden asparagus)) ; 玉蕊科 (Lecythidaceae)*Mammea americana* (mammey, mammee, South American apricot, mammy apple)、馬錢科(Loganiaceae)的 *Strychnos atherstonei* (cape teak)、馬錢木(*Strychnos nux-vomica* (strychnine tree, nux-vomica tree))、*Strychnos pungens* (poison nut, wild orange) ; 黃耨花科(Malpighiaceae)的 *Malpighia* sp.、黃耨花(*Malpighia glabra* (Barbados cherry, huesito, acerola))、榴葉黃耨花(*Malpighia puniceifolia* (Barbados cherry, West Indian cherry, acerola)) ; 錦葵科 (Malvaceae) 的 *Gossypium barbadense* (sea island cotton, tree cotton)、*Gourliea decorticans* (chanar)、洛神葵(*Hibiscus sabdariffa* (roselle, Jamaica sorrel, Indian sorrel)) ; 桑科(Moraceae)的蘭嶼麵包樹(*Artocarpus altilis* (breadfruit))、麵包樹(*Artocarpus incisus*)、孟加拉榕(*Ficus benghalensis* (banyan tree, East Indian fig tree, Indian banyan, glabrous tree))、無花果(*Ficus carica* (common fig, lemon fig))、*Ficus indica*、*Flacourtia indica* (governor's plum)、*Maclura pomifera* (osage orange, bowwood) *Morus* spp. (mulberry) ; 桃金娘科 (Myrtaceae) 的 *Acmena smithii* (lillypilly)、*Eugenia axillaris* (Whitestopper eugenia)、巴西蒲桃(*Eugenia brasiliensis* (Spanish cherry, Brazil cherry, Brazilian plum, Brazil eugenia, grumichama))、肯氏蒲桃(*Eugenia cumini*)、巴西蒲桃(*Eugenia dombeyi*)、*Eugenia edulis*、*Eugenia jambolana*、*Eugenia jambos*、爪哇蒲桃(*Eugenia javanica*)、麻六甲蒲桃(*Eugenia malaccensis*)、*Eugenia michelii*、單子蒲桃(*Eugenia pitanga* (pitanga))、稜果蒲桃(*Eugenia uniflora* (Surinam cherry, Brazil cherry, Barbados cherry, pitanga, Florida cherry, French cherry, cayenne cherry))、*Eugenia uvalha* (uvaia)、草莓番石榴

(*Psidium cattleianum*)、番石榴(*Psidium guajava* (common guava, guajava, pomiform guajava, pyriform guajava))、*Psidium guineense* (Brazilian guava)、草莓番石榴(*Psidium littorale* (strawberry guava, Cattley guava, waiawi, yellow Cattley guava, yellow strawberry guava))、*Psidium lucidum*、*Syzygium* sp. (jambosa)、*Syzygium aqueum* (jambosa)、肯氏蒲桃(*Syzygium cumini* (jambolan, jambu, Java plum, black plum))、*Syzygium jambolana*、蒲桃(*Syzygium jambos* (rose apple, jambos, malabar palm))、馬來蒲桃(*Syzygium malaccense* (ohia, mountain apple, Malay apple, pomerac jambos, rose apple))、蓮霧(*Syzygium samarangense* (Java apple, wax apple, jambosa, jumrool))；芭蕉科(Musaceae)的 *Musa acuminata* (dwarf banana, Chinese banana)、香牙蕉(*Musa cavendishii*、*Musa chinensis*)、木瓜芎蕉(*Musa X paradisiaca* (common banana, plantain, Blue-field banana))、香蕉(*Musa X sapientum*)、*Myrciaria cauliflora* (jaboticaba, Brazilian grape tree)；木犀科(Oleaceae)的齊墩果 *Olea europaea* (common olive)；酢醬草科(Oxalidaceae)的楊桃(*Averrhoa carambola* (carambola, caramba, bilimbing, starfruit, country gooseberry))；棕櫚科(Palmae)的砂糖椰子(*Arenga pinnata* (sugar palm, black-fiber palm))、*Butia* spp. (butia palm)、凍子椰子(*Butia capitata* (jelly palm, South American jelly palm, coco palm, Brazilian butia palm, pindo palm))、*Cocos campestris*、羅傑氏棕櫚(*Latania loddigesii* (blue latan, blue palm))、海棗(*Phoenix dactylifera* (date, date palm))；露兜樹科(Pandanaceae)的 *Pandanus odoratissimus* (breadfruit, pandang, pandanus)；罌粟科(Papaveraceae)的薊罌粟(*Argemone mexicana* (Mexican poppy, cardosanta, cardo, Mexican prickle poppy))；薔薇科(Rosaceae)的 *Chaenomeles sinensis*、*Chrysobalanus ellipticus*、可口梅(金果梅)(*Chrysobalanus icaco* (cocoplum, icaco, gopher apple,

gopher plum, jaco coco plum)), *Crataegus* sp., *Crataegus azarolus* (Azarole hawthorn)、*Crataegus floridana* (Jacksonville hawthorn)、*Crataegus galbana* (hawthorn)、*Crataegus uniflora* (hawthorn)、*Cydonia sinensis* (flowering quince, Chinese quince)、溫棗(*Cydonia vulgaris*)、枇杷(*Eriobotrya japonica* (loquat, Japanese medlar, Japanese plum, Malta plum))、草莓(*Fragaria chiloensis* (strawberry, Chilean strawberry, beach strawberry))、蘋果(*Malus sylvestris* (apple, crab apple))、*Prunus amygdalus*、杏仁樹(*Prunus armeniaca* (apricot))、*Prunus avium* (sweet cherry, bird cherry)、*Prunus capuli*、*Prunus cerasifera* (cherry plum, myrobalan)、*Prunus cerasus* (sour cherry, pie cherry)、*Prunus domestica* (common plum, prune, garden plum, European plum)、巴旦杏(*Prunus dulcis* (almond))、*Prunus insitita* (Damson plum, bullace plum)、郁李(*Prunus japonica* { Japanese (Chinese) bush cherry, Japanese (Chinese) plum, flowering almond })、*Prunus myrobalana*、桃(*Prunus persica* (peach))、*Prunus persica* (L.) *Batasch* cv. *Nectarina* (nectarine)、*Prunus persica* (L.) *Batsch* cv. *nucipersica*、李 *Prunus salicina* (Japanese plum)、*Prunus salicina* Lindl. X *P. cerasifera* (Methley plum)、*Prunus umebellata* (wild plum, flatwoods plum)、*Psidium araca*、*Pyracantha* sp. (*Pyracantha*)、*Pyracantha coccinea* M. J. Roem. cv. *Lalandei* (laland firethorn, lalandei)、*Pyrus communis* (pear) *Pyrus* X *lecontei* L. cv. *LeConte* (LeConte pear) *Pyrus malus*、*Rubus* sp. (blackberry, dewberry, raspberry, youngberry, loganberry)、*Rubus lucidus* (blackberry)、*Sorbus* sp. (mountain ash, sorbe apple) ; 西番蓮科(*Passifloraceae*)的 *Passiflora* spp.、*Passiflora antioquiensis* (tacsonia, banana passion fruit)、*Passiflora caerulea* (blue passionflower, blue-crown passionflower, passionfruit, passionflower) 百香果(*Passiflora edulis* (purple granadilla, lilikoi, passionfruit))、毛西番蓮

(*Passiflora foetida* (running pop, love-in-a-mist, wild water lemon, Tagua passionflower))、*Passiflora incarnata* (wild passionflower, maypap, apicot vine)、樟葉西番蓮(*Passiflora laurifolia* (yellow granadilla, water lemon, bell apple, Jamaica honeysuckle))、*Passiflora ligularis* (sweet granadilla, granadilla de China, sweet cup)、*Passiflora macrocarpa*、*Passiflora mollissima* (banana passion fruit, lilikoi, softleaf passion flower)、大果西番蓮 *Passiflora quadrangularis* (giant granadilla)、三角葉西番蓮 (*Passiflora suberosa* (passion flowerer))、*Passiflora subpeltata* (granadina)、*Passiflora van-volxemii* ; 羅漢松科 (Podocarpaceae) 的微葉羅漢松 (*Podocarpus elongatus* (African yellowwood, fern podocarpus, weeping podocarpus)) ; 安石榴科 (Punicaceae) 的安石榴 (*Punica granatum* (pomegranate)) ; 茜草科 (Rubiaceae) 的 *Coffea* spp. (coffee)、咖啡樹 (*Coffea arabica* (common coffee, Arabian coffee))、大葉咖啡 (*Coffea canephora* (robusta coffee))、利比亞咖啡 (*Coffea liberica* (Liberian coffee)) ; 鼠李科 (Rhamnaceae) 的 *Rhamnus californica* (buckthorn, coffeeberry)、滇刺茄 (*Zizyphus jujuba* (jujube, Chinese date))、印度棗 (*Zizyphus mauritiana* (Indian jujube))、*Zizyphus sativa*、*Zizyphus vulgaris* ; 芸香科 (Rutaceae) 的鳥柑 (*Atalantia buxifolia*)、*Chalcas exotica*、*Chalcas paniculata*、長果金柑(金棗) (*Fortunella margarita* (citrangequat))、萊姆 (*Citrus aurantiifolia* (lime, sour lime, Mexican lime, key lime, kusaie lime, Swingle lime, Persian lime, Tahiti lime))、橘柑 (*Citrus aurantium* (sour orange, bitter orange, bigarade, Seville orange, bittersweet orange, myrtle-leaf orange))、*Citrus decumana*、*Citrus deliciosa*、柚 (*Citrus grandis*)、*Citrus jambhiri* (rough limon)、*Citrus japonica*、*Citrus limettioides* (sweet lime, Indian sweet lime, Palestine sweet lime, lime)、檸檬 (*Citrus limon* (lemon, sour lemon))、(*Citrus limon* (Meyer

lemon, Chinese dwarf lemon))、廣東檸檬(*Citrus limonia* (Rangpur lime, lemandarin, Otaheite orange, sweet lemon, lemon)、*Citrus madurensis*、*Citrus maximas* haddock, pomelo, pommelo, pumelo, pummelo, pompelmous, pompelmoes, grapefruit) 、 (*Citrus medica* citron, ederate, erog, cedro, cedrone, cedra, ponce, cedrat, bushukon))、(*Citrus medica* L. X. *C. aurantium* (citrangequat))、*Citrus meyeri*、*Citrus mitis* 九年母(*Citrus nobilis* (tangor, king orange, murtle orange, temple orange, mandarin orange))、葡萄柚(*Citrus paradisi* (grapefruit, Macfady pomelo))、*Citrus reshni* (Cleopatra mandarin) 椪柑(*Citrus reticulata* (mandarin orange, tangerine, Clementine orange, satsuma orange, Mediterranean tangerine, Dancy tangerine))、甜橙(*Citrus sinensis* (sweet orange, Valencia orange, navel orange, Lue Gim Gong orange, Lambs summer orange, malta orange, Parson Brown orange))、*Citrus taitensis*、*Citrus tangelo* (Thornton, tangelo, Vero tangelo, Orlando tangelo)、*Citrofortunella floridana* (Eustis limequat)、*Citrofortunella mitis* (calamondin orange, Panama orange, orangequat, Chinese orange, calamondin, alani-'awa'awa、*Citroncirus webberi* (citrange)、黃皮(黃柑)(*Clausena lansium* (Chinese wampeee, wampi))、*Clausena punctata*、*Clausena wampi*、寧波金柑(金柑)*Fortunella crassifolia* Swingle、*Fortunella hindsii* (Hong Kong kumquat)、圓果金柑(金棗)*Fortunella japonica* (kumquat, round kumquat, marumi kumquat, Chinese orange)、*Fortunella margarita* (oval kumquat, nagami kumquat, megami kumquat)、*Glycosmis pentaphylla* (Jamaica mandarin orange, glycosmis, Malay glycosmis)、*Murraya exotica*、月橘(十里香)*Murraya paniculata* { orange jasmine (jessamine), satinwood, cosmetic-bark tree, Chinese box, mock orange, jasminorange }、枳殼(*Poncirus trifoliata* (trifoliate orange,

hardy orange)) ; 楊柳科(Salicaceae)的 *Salix* sp. (willow leaf) ; 檀香科(Santalaceae)的 *Santalum* sp. (sandalwood)、*Santalum album* (sandalwood)、*Santalum freycinetianum* Gaud. cv. Littorale (beach sandalwood, yellow Fiji sandalwood)、*Santalum paniculatum* ; 無患子科(Sapindaceae)的荔枝(*Litchi chinensis* (litchi, leechie, lychee))、毛龍眼(*Nephelium lappaceum*)、*Nephelium litchi*、*Nephelium longan*、*Noronhia emarginata* (Madagascar olive, noronhia, Chinese plum) ; 山欖科(Sapotaceae)的人心果(*Achras zapota*)、*Arenga saccharifera*、星蘋果(*Chrysophyllum cainito* (star apple, caimito, stain leaf))、(*Chrysophyllum delevoiyi* (African star apple))、石星蘋果(*Chrysophyllum monopyrenum*)、*Chrysophyllum oliviforme* (satin leaf, damson plum, star apple, caimitillo)、*Chrysophyllum polynesianum*、*Chrysophyllum viridifolium*、*Lucuma bifera*、蛋黃果(*Lucuma nervosa*)、人心果 *Manilkara zapota* (sapodilla, nispero, chicozapote, naseberry, chicletree, achras sapote)、乳樹(*Mimusops* sp. (milkwood))、*Mimusops caffra* (kafir bulletwood)、牛油果(*Mimusops elengi* (Spanish cherry, medlar, elengi tree, pogada, West Indian medlar, elengi bulletwood))、*Pouteria campechiana* (canistel, eggfruit, sapote borracho, sapote amarillo, canistel incuma)、*Pouteria sapota* { *sapote* (spota), mamey sapote, mamey colarado, marmalade plum, mamee sapote, marmalade fruit }、*Pouteria viridis* (injerto)、*Prunus americana* (wild plum, August plum, American plum, native plum)、*Sideroxylon inerme* (ironwood, jungle plum)、*Sideroxylon mastichodendron*、*Smilax sandwicensis*、*Mimusops kirkii* ; 虎耳草科(Saxifragaceae)的 *Ribes* sp. (currant, gooseberry) ; 苦木科(Simarubaceae)的(*Brucea antidysenterica*) ; 茄科(Solanaceae)的(黑胡椒 *Capsicum* spp. (pepper))、櫻椒(*Capsicum annum* L. cv. *Annum* Cerasiforme

Group (Cherry pepper)、番椒(*Capsicum annuum* L. cv. *Annuum* Conoides Group (corn pepper, red pepper)、朝天椒 (*Capsicum annuum* L. cv. *Annuum* Fasciculatum Group (red cherry pepper, cluster pepper)、青椒(*Capsicum annuum* L. cv. *Annuum* Grossum Group (pepper, sweet pepper, green pepper, pimento pepper)、辣椒(*Capsicum annuum* L. cv. *Annuum* Longum Group (capsicum pepper, cayenne pepper, chili pepper, long pepper, red pepper)、番薑(*Capsicum frutescens* (tabasco peper, tabasco-sauce pepper, bush red pepper)、夜香花(*Cestrum nocturnum* (night jessamine, Chinese inkberry, night-blooming cestrum)、*Cestrum parqui* (willow-leaved jessamine, Chilean cestrum)、樹番茄 *Cyphomandra betacea* (tree tomato, tomato tree)、*Lycium carnosum*、*Lycium carolinianum* (Carolina wolfberry, boxthorn)、枸杞 *Lycium chinensie* (box thorn, Chinese matrimony vine)、*Lycium europaeum* (box thorn, European wolfberry)、*Lycium horridum* (African buckthorn, boxthorn)、*Physalis ixocarpa* (husk tomatillo, jamberry)、秘魯苦蕒 *Physalis peruviana* (cape gooseberry, poha, Barbados gooseberry)、刺茄 (*Solanum aculeatissimum* (soda-apple nightshade, love apple, cockroach berry)、瑪瑙珠(*Solanum capsicastrum* (solanum cherry, false Jerusalem cherry, Jerusalem cherry, cherry solanum)、*Solanum carolinense* (Caroline horse-nettle, ball nightshade)、*Solanum coagulans*、*Solanum erianthum*、*Solanum melanocerasum* (solanberry black nigheshade, garden huckleberry)、紅茄 (*Solanum melongena* (garden eggplant, eggplant)、*Solanum muricatum* (pepino, melon shrub)、龍葵(*Solanum, nigrum* (black nightshade, poison berry)、*Solanum nigrum* L. cv. *guineense*、玉珊瑚 (*Solanum pseudocapsicum* (Jerusalem-cherry)、*Solanum seaforthianum* (Brazilian nightshade)、二裂星毛刺茄(*Solanum sisymbriifolium* (sticky

nightshade, nightshade))、*Solanum sodomium* (apple of Sodom, yellow popolo, Dead Sea apple)、山煙草 (*Solanum verbascifolium* (Potato tree, mullein nightshade)) ; 梧桐科 (Sterculiaceae) 的可可樹 (*Theobroma cacao* (cacao, cocoa, chocolate tree)) ; 瑞香科 (Thymelaeaceae) 的 *Wikstroemia phillyreifolia* (akia) ; 田麻科 (Tiliaceae) 西印度櫻桃 *Muntingia calabura* (capulin, Panama berry, strawberry tree, Jamaican cherry) ; 榆科 (Ulmaceae) 的 *Celtis kraussiana* (camdeboo) ; 葡萄科 (Vitaceae) 的 *Vitis* sp. Hybrid (beacon grape)、*Vitis labrusca* (fox grape, skunk grape, Isabella grape)、葡萄 (*Vitis vinifera* (wine grape, European grape, grape, druiven)) ; *Aberia caffra* ; *Acokanthera longiflora* (poison tree, bushman's-poison, poison bush) ; *Adelia segregata* (Adelia, Florida privet) ; *Arbutus unedo* (strawberry tree, strawberry madrone, cane apple) ; *Argania sideroxylon* ; *Argania spinosa* (argan tree, Morocco ironwoos) ; *Aronia arbutifolia* (red chokeberry) ; *Asimina obovata* (bigflower pawpaw) ; *Asimina parviflora* (smallflower pawpaw) ; *Asimina pygmaea* (sprawling pawpaw) ; *Asimina reticulata* (seminoletea pawpaw, common pawpaw) ; *Asimina triloba* (papaw, pawpaw) ; 顛茄 *Atropa belladonna* (belladonna, deadly nightshade) ; 阿開木 *Blighia sapida* (akee) ; 美洲黃欖 *Bumelia lanuginosa* (chittamwood, shittimwood, false buckthorn) ; 南方鼠李 *Bumelia lycioides* (buckthorn, southern buckthorn) ; 鼠李 *Bumelis tenax* (tough bumelia, buckthorn) ; *Byrsonima crassifolia* (craboo, nance) ; *Calocarpum sapota* ; *Casimiroa edulis* (white sapote, Mexican apple, zapote blanco) ; *Citharexylum fruticosum* (Florida fiddlewood) ; *Citroncirus webberi* J. Ingram & H. E. Moore ; *Clintonia umbellulata* (speckled beadlily, dog plum) ; *Coccoloba diversifolia* (pigeon plum, snailseed, pigeon sea grape, dove plum) ; *Coccoloba floridana* ; *Coccoloba*

laurifolia ; 海葡萄 *Coccoloba uvifera* (seagrape) ; *Cupania sapida* (common quince, mannela, marmela) ; *Dovyalis caffra* (kei-apple, kai-apple, kau-apple, umkokolo) ; *Dovyalis hebecarpa* (ketembilla, Ceylon gooseberry) ; *Ekebergia capensis* (dog plum) ; *Feijoa sellowiana* (pineapple, guava, feijoa, guavasteen) ; *Forestiera porulosa* ; *Harpephyllum caffrum* (kafir plum) ; *Heteromeles* sp. (toyon) ; *Homalocladium platycladum* (centipede plant, tapeworm plant, ribbonbush) ; *Jambosa malaccensis* ; *Geobalanus oblongifolius* (gopher apple) ; *Lycopersicon esculentum* ; *Marrubium vulgare* (common hoarhound, white hoarhound) ; *Mastichodendron foetidissimum* (mastic, ironwood) ; *Melicoccus bijugatus* (Spanish lime, genip, mamoncillo, honeyberry) ; *Micropholis mexicana* (baricoco) ; *Myrciaria edulis* (willowleaved eugenia) ; *Nyssa biflora* ; *Nyssa ogeche* (ogeche lime, ogechi plum, ogeechee tupelo) ; *Nyssa sylvatica* Marsh. ; *Nyssa sylvatica* Marsh. cv. *Biflora* (black gum, swamp black tupelo) ; *Peponium mackenii* (wild cucurbit) ; *Pimenta dioica* (allspice, pimento) ; *Pimenta officinalis* ; *Peper* sp. (pepper) ; *Pleiogynum cerasiferum* (burdekin plum, Queensland hog plum) ; *Pleiogynium solandri* ; *Rheedia brasiliensis* ; *Rosmarinus officinalis* (rosemary) ; *Royena pallens* (pale-branched royena) ; *Royena pubescens* (monkey apple) ; *Sapota achras* ; *Serenoa repens* (saw palmetto, scrub palmetto) ; *Serenoa serrulata* ; *Syagrus campestris* (syagrus, syagrus coconut, field syagrus palm) ; *Synsepalum dulcificum* (Miraculous fruit) ; *Tacsonia mollissima* ; *Tacsonia van-volxemii* ; *Teclea trichocarpa* ; *Umbellularia californica* (California bay laurel) ; *Vangueria edulis* (vangueria, tamarind-of-the-Indies, voavanga, Madagascar plum) ; *Vangueria infausta* (wild medlar) ; *Vangueria madagascariensis* ; *Vasconcellia quercifolia* (broad

bean, English bean, European bean, field bean, tick bean, Windsor bean, horse bean, fava bean) ; *Ximenia americana* (tallow-wood)。

三、地理分佈

本種之分布很廣，如下：

亞洲(Asia)：以色列(Israel)、約旦(Jordan)、黎巴嫩(Lebanon)、沙烏地阿拉伯(Saudi Arabia)、敘利亞(Syria)及土耳其(Turkey)

北美洲(North America)：夏威夷(Hawaii)及馬里亞納群島(Mariana Islands)

中美洲(Central America)：百慕達(Bermuda)、哥斯達黎加(Costa Rica)、聖薩爾瓦多(El Salvador)、瓜地馬拉(Guatemala)、宏都拉斯(Hondures)、牙買加(Jamaica)、尼加拉瓜(Nicaragua)及巴拿馬(Panama)

南美洲(South America)：阿根廷(Argentina)、玻利維亞(Bolivia)、巴西(Brazil)、智利(Chile)、巴拉圭(Paraguay)、秘魯(Peru)、烏拉圭(Uruguay)及委內瑞拉(Venezuela)

歐洲(Europe)：阿爾巴尼亞(Albania)、奧地利(Austria)、亞速爾群島(Azores)、比利時(Belgium)、克里特島(Crete)、賽普魯斯(Cyprus)、捷克(Czechoslovakia)、法國(France)、德國(German)、希臘(Greece)、匈牙利(Hungary)、意大利(Italy)、馬爾他(Malta)、荷蘭(Netherlands)、葡萄牙(Portugal)、西班牙(Spain)、瑞士(Switzerland)、土耳其(Turkey)、南斯拉夫(Yugoslavia)及蘇聯(USSR)

非洲(Africa)：摩洛哥(Morocco)、阿爾及利亞(Algeria)、突尼西亞(Tunisia)、利比亞(Liberia)、尼日(Niger)、埃及(Egypt)、蘇丹(Sudan)、象牙海岸(Ivory coast)、奈及利亞(Nigeria)、依索比亞(Ithiopia)、剛果(Congo)、烏干達(Uganda)、肯亞(Kenya)、坦尚尼亞(Tanzania)、安哥拉

(Angola)、莫三鼻給(Mozambique)、辛巴威(Zimbabwe)、南非(South Africa)、貝南(Benin)、蒲隆地(Burundi)、卡那利島(Canary Island)、維得角群島(Cap Verde Islands)、加彭(Gabon)、加納(Ghana)、幾內亞(Guinea)、馬達加斯加(Madagascar)、馬德拉島(Madeira)、馬拉威(Malawi)、馬里(Mali)、模里西斯(Mauritius)、留尼旺(R'eunion)、聖赫勒拿島 St. Helena)、太子島(Sao Tom'e)、塞內加爾(Senegal)、塞席爾(Seychelles)、東加(Togo)、上伏塔(Upper volta)

大洋洲(Oceania)：澳洲(Australia)。

四、鑑別特徵

(一)危害癥狀

成蟲產卵在果實內，產卵時造成傷口。幼蟲蛀食果肉，致果實失去商品價值。

(二)形態

1.幼蟲

幼蟲白色；典型果實蠅形狀(圓筒 - 蛆型，長，前端窄且有點向腹面彎曲，有前口鉤、腹面紡錘狀區，尾端平坦)；末齡幼蟲通常 7~9mm；腹面有 8 個紡錘狀區；前口腔脊起通常 9~10 條；在小管列背脊上的前氣孔通常幾乎是直的(通常比描述還直)；有平均 9~10 條的小管(也許)。

頭咽吻骨每側有大且尖凸的口鉤，約為下唇的 2 倍長；下唇有明顯且圓的亞下唇；後口下板從背面彎曲至背脊且和翅背板中央區域的硬化線癒合，口側明顯；背脊前方有一明顯硬化點；翅背板幾乎和咽喉板等長，中央區域極不硬化；咽喉板長，中間有明顯口鉤，前方有硬化區。

尾端在極平硬皮板的小框上有 2 分枝或成對的背乳

頭狀突起(D1 及 D2)；中間的乳頭狀突起(I1~2)位在極大的亞氣孔瘤突(subspiracular tubercle)上形成 1 條癒合的隆起，遠處的 I3 和 I1~2 成 45° ；L1 在尾端邊緣的中間；V1 不明顯；後氣孔長形(長為寬的 4.5~5 倍)；背氣孔及腹氣孔和中間平面上的氣孔成一角度且分隔很開；氣孔間突起(毛)通常無分枝，臀瓣 2 裂或完整。

2.成蟲

屬小型之種類，其長度為 4.5—5.5mm。額第 2 對上側剛毛末端膨大呈鑽石狀。中胸背板黑色，但有灰色條紋，後方黃色，但腹部黃色。小楯板黑色，但基部有波浪狀之黃色橫條。翅之前緣帶與基帶相連，端帶短，這些條紋呈黃色及棕色。本種迄目前約有 101 個變異種。